

### APPLICATION

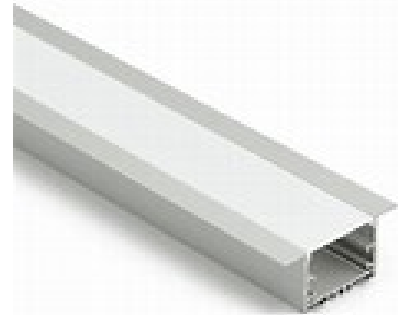
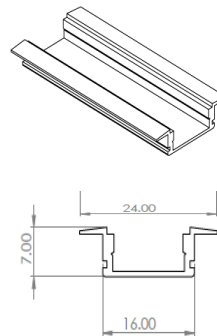


### LINEAR PROFILE

Linear Led Profile Housing which allows to recess Led strip as Recessing Mounting .

#### CHARACTERISTICS

Length	3000mm
Width	24mm
Height	7 mm
Material Standard	Extruded Aluminum
Reflector	Opal polycarbonate



### PHYSICAL CHARACTERISTICS

Installation	LED Strip
Length	5000mm
Height	10mm
Width/Diameter	10mm
IP-Rating	IP 65-IP67(Optional)
Material Standard	Silica

### ELECTRIC / PHOTOMETRIC DATA

Light Source	SMD 2835
Color Rendering Index	Ra>80
Color Temperature	3000k-Blue / White Neon Silica
Power Factor	>0.95

### SPECIFICATIONS

Code	Power	Total Luminous Flux	System Efficacy	No.of Leds	Driver Or Adaptor
STR-5M-DR-4.8W	25W(4.8W / m)	3000Lm/5m(600 lm/m)	120lm/W	60	Adapter
STR-5M-DR-14.4W	72W(14.4W/m)	6000Lm/5m(1200 lm/m)	85lm/W	120	Adapter
STR-5M-DR-4.8W-ME	25W(4.8W / m)	3000Lm/5m (600 lm/m)	120lm/W	60	Mean-well / LPV-35
STR-5M- DR-14.4W-ME	72W(14.4W/m)	6000Lm/5m(1200 lm/m)	85lm/W	120	Mean-well / LPV-100
STR-5M-DR-10W-NEON-IP67	50W(10W/m)	3500Lm/5m(700 lm/m)	70lm/W	120	Adapter
STR-5M-DR-10W-NEON-IP67-ME	50W(10W/m)	3500Lm/5m(700 lm/m)	70lm/W	120	Mean-well / LPV-100

### DRIVER OPTIONS / SPECIFICATIONS

Driver	Power Output Max.	Output Current	Power Factor	Temp. °C	Efficiency η	AC operate V η
Mean-well / LPV-35-12	35 W	0 ~ 3A	>0.9	-30°C~75°C	>85	90-264 VAC
Mean-well / LPV-100-12	100W	0 ~ 8A		-30°C~75°C		90-264 VAC

### MISCELLANEOUS SPECIFICATIONS

Energy Class	Mains Voltage	Frequency	Safety Class	Operational Temp	Rated Service Life (H)
+A	220V – 240V AC	50 \ 60 Hz	II	- 25°C / + 50° C	50.000Hrs